

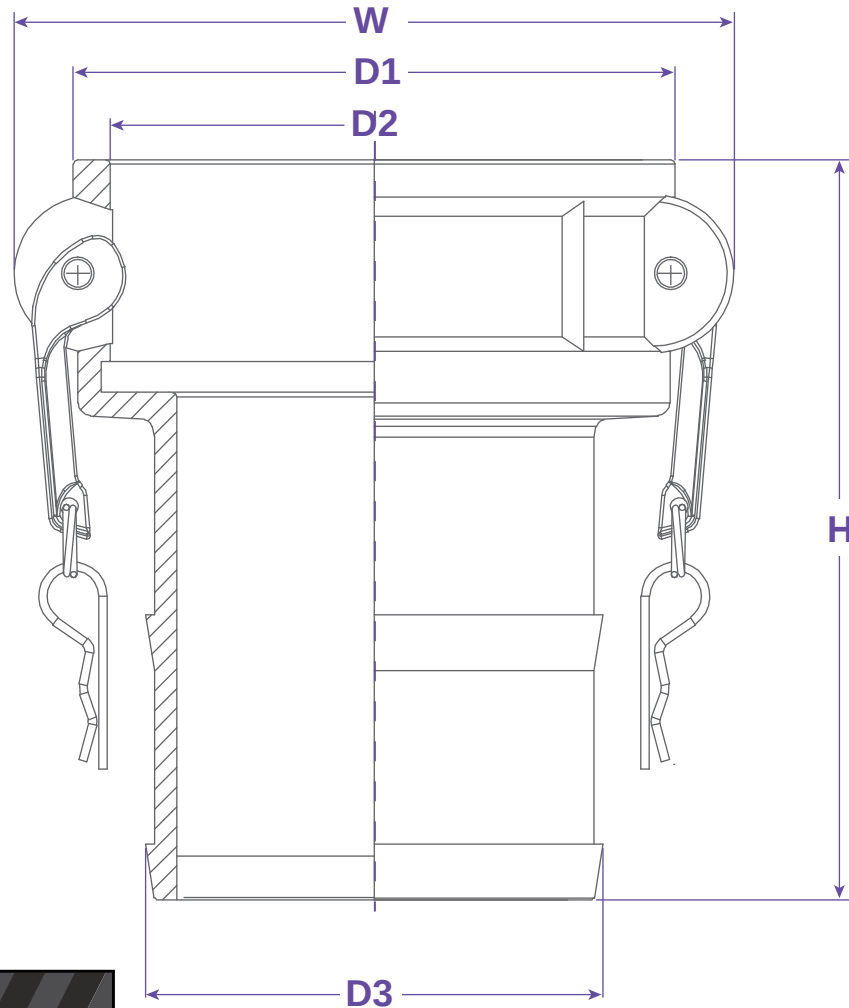


SEALFAST
THE SIMPLE SOLUTION

COUPLINGS & ACCESSORIES



TYPE C



FEATURES & APPLICATIONS:

• General Uses:

A camlock fitting is a type of coupling that is used to connecting hose and or pipes together that transfers liquids, powders and granules. A straight through connection is made that maintains the pipe size and allows the free flow of materials being transferred.

Size	Working PSI	D1	D2	D3	H	W	PART #
1/2" X 3/4"	125	1.614	1.272	0.843	3.248	2.284	C050075PP
3/4"	150	1.835	1.465	1.051	3.721	2.598	C075PP
1"	150	2.260	1.811	1.319	4.075	2.992	C100PP
1/4" X 1/4"	150	2.571	2.122	1.567	4.193	3.386	C125125PP
1-1/2"	150	2.992	2.508	2.067	5.295	3.780	C150PP
2"	150	4.154	3.626	3.098	6.181	5.079	C200PP
3"	150	5.354	4.732	4.098	6.634	6.181	C300PP
4"	75	6.378	5.752	5.126	7.480	7.323	C400PP

WARNING: Cam & Groove Couplings should **NOT** be used with any compressed gas, including steam or air. Metal fittings should **NOT** be used with Polypropylene Cam & Groove. Dust Caps and Dust Plugs are **NOT** designed for pressure applications.

Note: All Seal Fast Cam & Groove Stainless Bodies are 316 Investment with 304 Handles.

TITLE TYPE C - FEMALE COUPLER X SHANK

DISCLAIMER

All drawings and specifications are subject to change without notice. Drawings represent general dimensions of our products. Seal Fast cannot guarantee the dimensions in the drawing will exactly match those in the drawing. This drawing is the property of Seal Fast Inc. Copying or reproduction of this drawing is expressly prohibited.

MATERIAL

POLYPROPYLENE

DRAWING NOT TO SCALE

PART

C...PP

